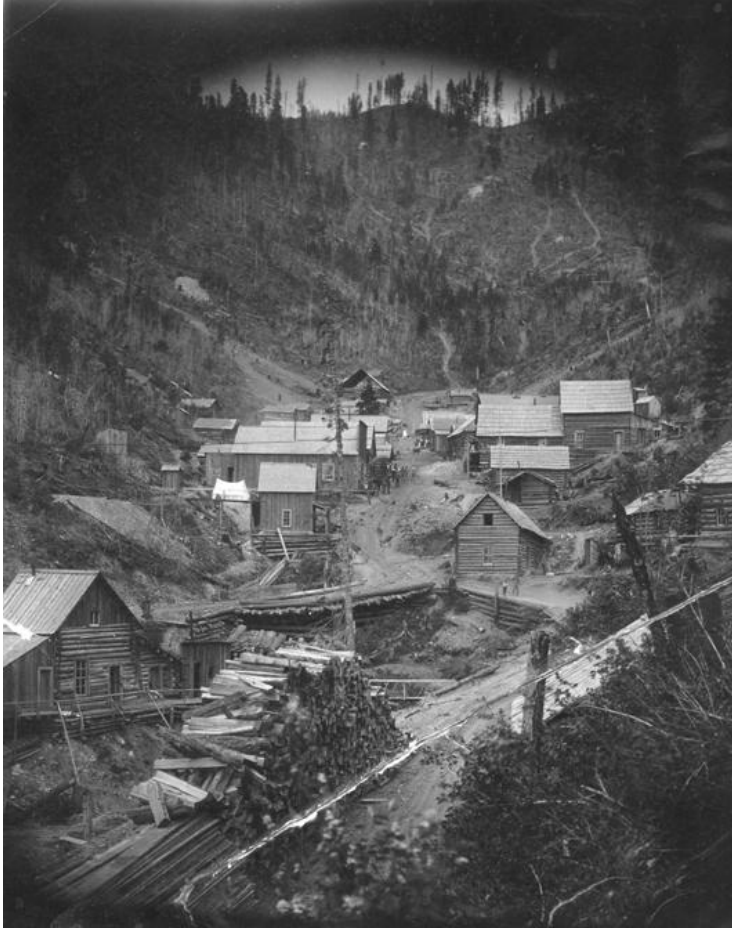


Iron Mountain
May 2010

Our most recent trip was on Sunday, May 23, to Superior area, up Flat Creek to the Iron Mountain mine, and on up Hall Gulch on the old wagon road to the old town remains of Pardee.



Pardee before 1896

This was an easy, but historical trip, in a Superfund area, as much of the colorful dirt we saw will be dug up in 2011 and transported to a repository for future generations to deal with. The old wagon road will be "improved" to allow dump truck and other heavy equipment to pass, so it probably won't be any fun in the future.



Iron Mountain Mine concentrator located about a mile downstream of Iron Mountain Mine at Pardee 1898

We followed the ridge between Flat Creek and Siegel Creek, then down Devils and Eustache Creek to Ninemile Creek and home. Trip leader Bruce Erickson put together an informative narration with many historical photos.

We had 14 vehicles participate, a mix of club members and prospective members, including four Forest Service employees. Members: Willie and Jeanne Worthy, John and Donna Ayres, Bruce Erickson, Bill Boldt and daughter, Steve Knutsen and Brittany, Dan Simons and friend, Gil and Sara Floyd and family, Fred McDowell and friend, Dick and Sue Riebe, prospective members: Dave and Karen Knapp and family, and Bill Babington and Shona, and Jim and Laura Cornwell in their Grand Cherokee, and guests Chris and Pat Partyka from Plains.

The National Weather Service had predicted 70% chance of rain and snow, but mostly we had lots of DUST (visibility down to 100 feet at times!), a bit of snow and rain while we ate lunch, and only one good snow drift that required a multitude of passes to break through (Bruce wimped out and Willie had to be the guinea pig), along with lots of stop and go due to cutting trees out of trail. Area was very scenic and green, and we saw a variety of wildflowers, including much service berry, clematis, arrowleaf balsamroot, glacier lilies, trillium, yellow violets and Oregon grape.

It was great to have more families (and more women especially!) participating.

Thanks to Mineral County Historical Society for the photos and Jeanne Worthy for the write-up!